

RIFT TD VERSION 2.3.2.0

RELEASE NOTES

SEPTEMBER 2016

ENHANCEMENTS

This is a minor version release incorporating the following enhancements:

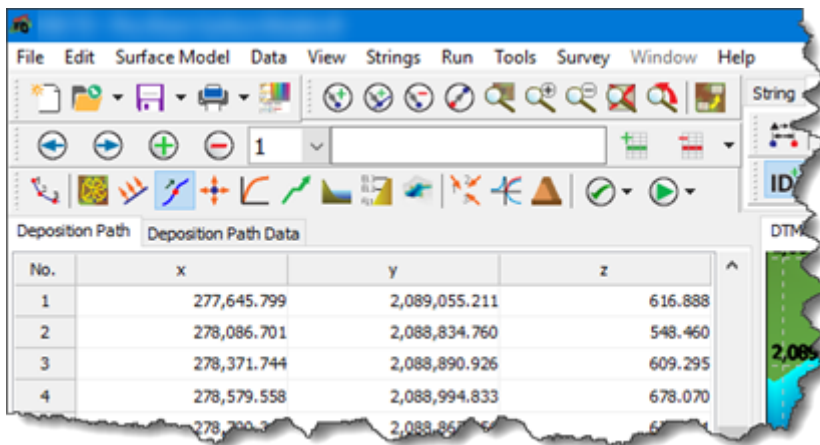
- Deposition Paths
- Edit User Data

It also addresses various minor bugs.

DEPOSITION PATHS

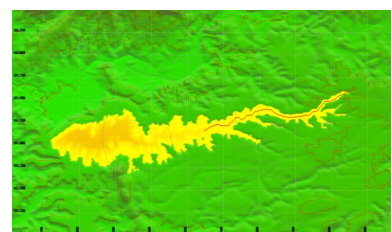
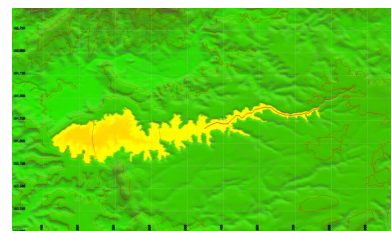
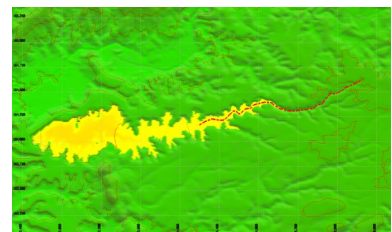
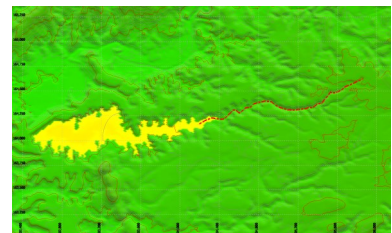
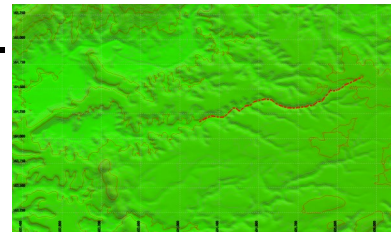
Deposition Paths are a new data type that define a path along which deposition occurs.

Deposition Paths are ideal for modelling deposition up a valley. In conjunction with **Deposition Lines** and **Deposition Nodes**, **Deposition Paths** allow the definition of extremely complex models.

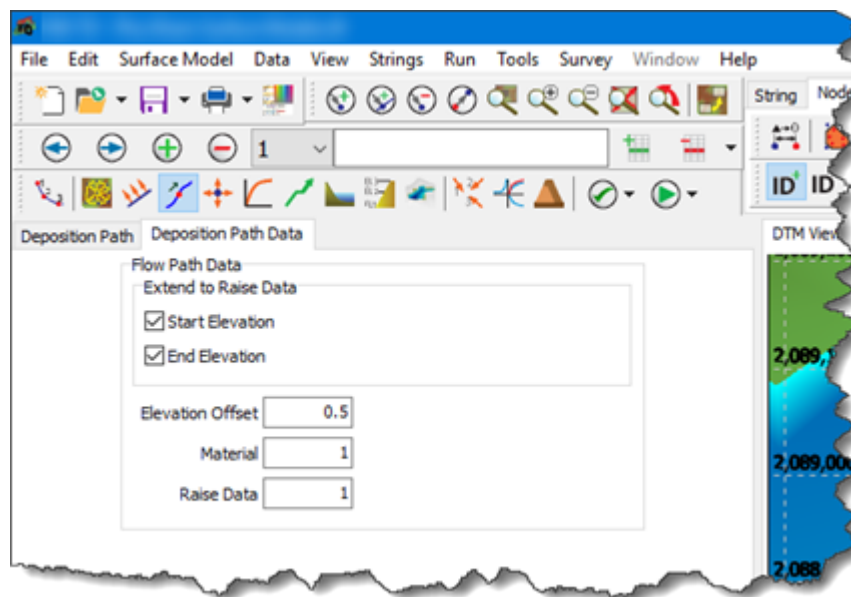


To define a **Deposition Path**:

- If necessary, **add** a **New Deposition Path**.
- **Activate** the **Deposition Path** data type:



- Click **Edit** → **Deposition Paths**, or
- Click the **Deposition Path Tool-button**.
- **Rift TD** provides three ways to define a **Deposition Path**:
 1. **DTM View**: **Right click** on the **DTM View** and **Click Data** → **Add**. **Click** on the **DTM View** to define the path.
 2. **Data Grid**: **Enter** data on the **Data Grid**.
 3. **Data Grid**: **Import** **ASCII** or **CSV** data points (**File** → **Import**).
- On the **Deposition Path Data Tab-sheet**:



- **Define** whether the Start and End Points should be extended to the **Raise Data**. If these options are not set deposition is restricted to the **Deposition Path** elevation range.
- **Define** the **Elevation Offset**. The **Elevation Offset** defines by how much the deposition point will be raised above the defined path.
- **Define** the **Material** to use.
- **Define** the **Raise Data** to use.

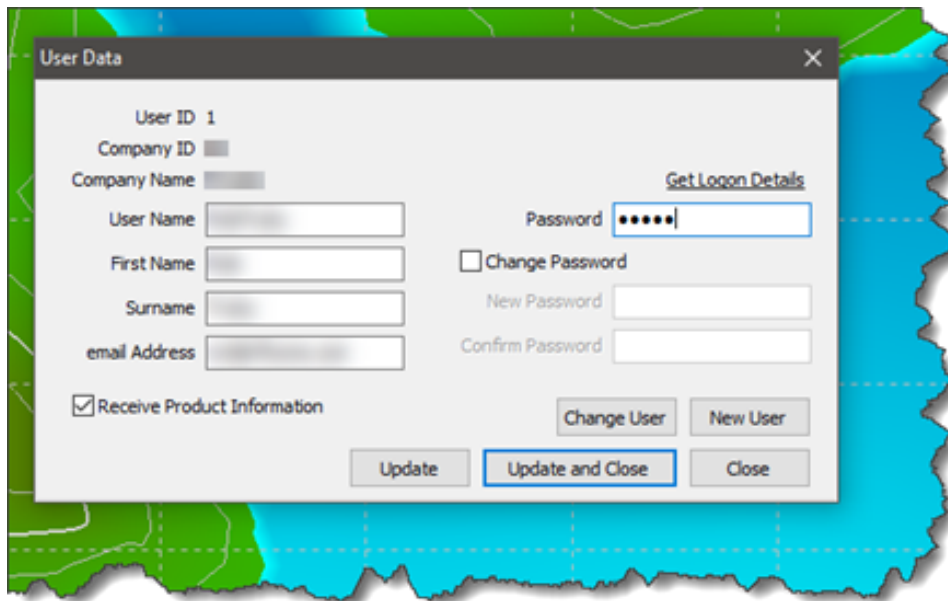
You can define as many **Deposition Paths** as you require; **click** the **Add Data List tool-button**.

See **Online Help** and the **User's Manual** for additional details.

EDIT USER DATA

Rift TD Version 2.3 introduces the ability to edit user data.

To edit user data **click Tools → Licence → User Data** and edit data on the **User Data Dialog**.



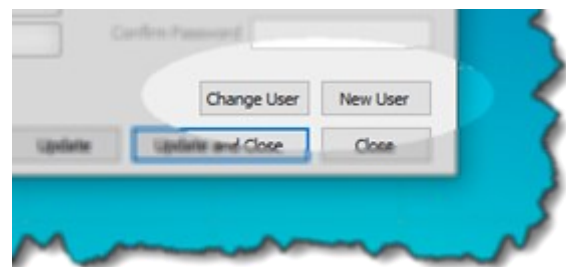
Edit data on the **User Data Dialog** and **click Update**, or **Update and Close**.

You are required to provide your logon password to update data. You can retrieve logon details in two ways:

1. **Click Get Logon Details** on the **User Data dialog**. You will be prompted for an email address; logon details will be emailed for all user instances registered to the email address.
2. **Click Tools → Licence → Logon Details**. An email message with the registered user's logon details will be sent to the registered email address.

You can also:

- **Change** the user registered to the computer. You will be required to provide the user logon details (user name and password).
- **Register** a new user and assign them to the **Rift TD** installation.



Additional details are provided in the **Online Help File**.