

RIFT TD VERSION 2.1.4.3

RELEASE NOTES

MAY 2016

ENHANCEMENTS

Rift TD Version 2.1.4.2 is a minor version release. It incorporates the following enhancements :

- Significantly improved result file processing
- Significantly improved pond generation
- Pond transparency
- Pond intermediate elevations
- Bug fixes

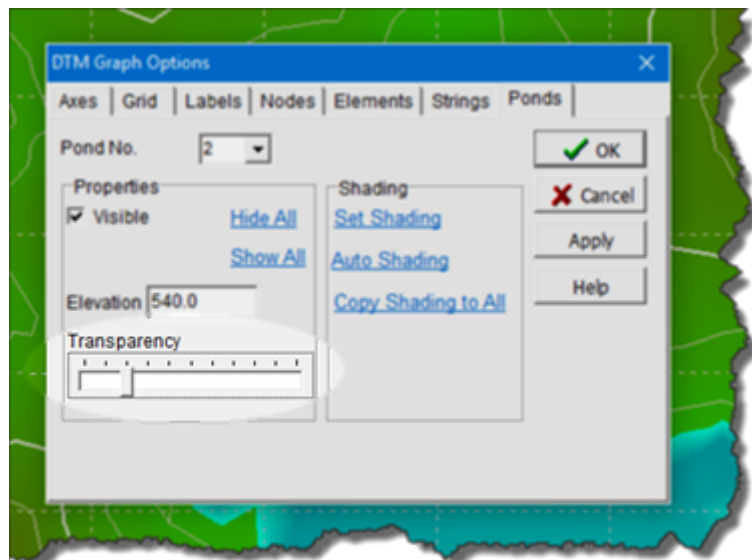
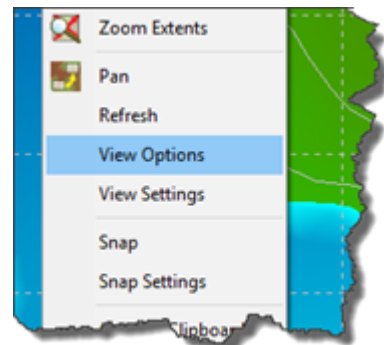
We hope that you enjoy this release.

POND TRANSPARENCY

Pond transparency is set on the View Options Dialog.

To set pond transparency:

- **Right click** on the **DTM** or **Three Dimensional View**
- **Click View Options**
- **Select the Ponds Tab**
- **Select** the pond to edit using the **Pond No. drop down box**
- **Drag** the **Transparency Slider** to set the desired transparency
- **Click Ok** when done



POND INTERMEDIATE ELEVATIONS

You can view intermediate pond elevations on the DTM and Three Dimensional views.

The intermediate pond elevation is set on the View Options Dialog.

To set the pond elevation:

- **Right click** on the **DTM** or **Three Dimensional View**
- **Click View Options**
- **Select** the **Ponds Tab**
- **Select** the pond to edit using the **Pond No. drop down box**
- **Enter** the desired elevation in the **Elevation Edit**
- **Press** the **spacebar** or **Apply Button** to accept the elevation and update the view
- **Click Ok** when done

